



**CATALYST**  
ORTHO SCIENCE®

# CATALYST CSR™ TOTAL SHOULDER SYSTEM

A departure from the status quo, the Catalyst CSR system is uniquely engineered to help patients of all ages. The unique TSA system offers precision and reproducibility in accurate joint line restoration while preserving the patient's bone and soft tissue.



## Engineering New Paradigms

Designed by surgeons for surgeons, Catalyst OrthoScience has leveraged proven arthroplasty design principles combined with innovative components and unique instrumentation to bring about a Complete Shoulder Restoration.

## Innovative, Anatomic Components

Angled pegs allow for oblique approach

Tapered-bearing rim for inherent stability

Pegs designed for immediate interference fit fixation

Augmented Glenoid now available with 10° version correction

Augmented 3-Peg Glenoid



3-Peg Glenoid



Press Fit Humeral Component

Ellipsoid for replicating anatomy  
Monoblock for ease of implantation

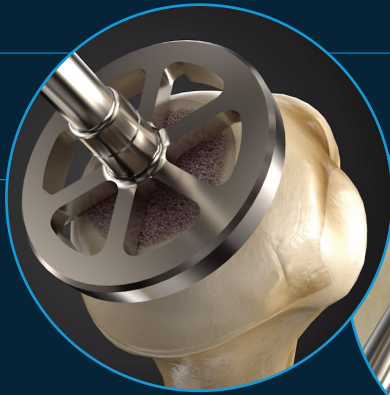
Multiplanar for load sharing and inherent stability

Press Fit component now available for speed and convenience

TO LEARN MORE CALL OR VISIT  
800.587.5137 CatalystOrtho.com

## Smart & Simple Instrumentation

Plunge reamer engineered to ensure head height reproducibility



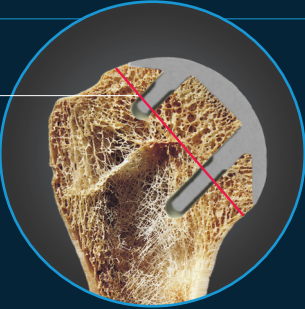
Angled glenoid reamer aids in glenoid exposure



**CATALYST**  
ORTHO**SCIENCE**®

## Bone & Soft Tissue Preservation

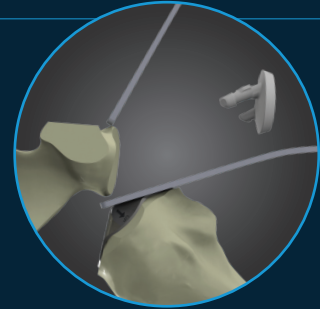
Traditional Free Hand Humeral Osteotomy



Preserves densest bone for patients of all ages



Multiplanar stability over strong subchondral bone

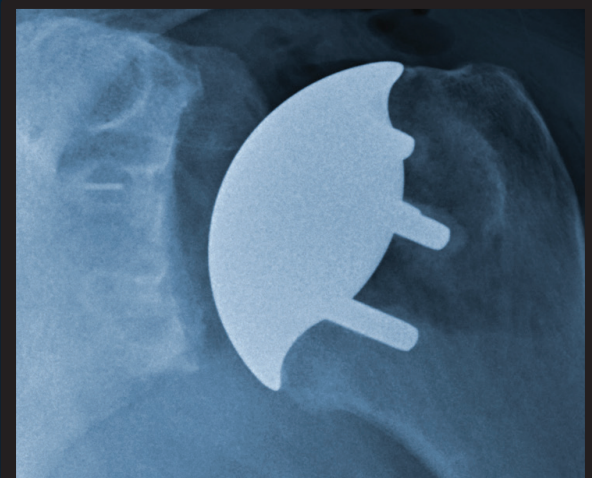


Tissue-sparing oblique glenoid approach

## Greater Precision in Restoring Native Center of Rotation

With ellipsoid humeral geometry and consistent head height restoration, the Catalyst CSR system has been shown to more precisely restore proximal humeral anatomy and the anatomic center of rotation (COR) within clinically significant parameters compared to a leading "anatomic" stemmed system.<sup>1</sup>

- 2.5-fold reduction in the number of clinically significant outliers (15% vs 40%)<sup>2</sup>
- Within the Catalyst group, 18 out of 55 procedures restored the anatomic COR to a change of less than 1.0 mm as compared to only 2 of 55 in the stemmed group



## Get Excited About TSA Again

"I have been using the Catalyst shoulder prosthesis for all my anatomic total shoulder arthroplasty cases since 2017. I have used most of the other systems currently available, and have found that the Catalyst is simply the most anatomic system on the market. The fit is a precise anatomic reconstruction in every single case. The surgical technique and instrumentation are pared down and streamlined, and the cases go much quicker. The system is easy to learn - the X-rays from my first Catalyst case looked perfect! I have been doing less soft tissue releases with the Catalyst, which means less postoperative pain and a faster recovery for my patients." — J. Michael Wiater, M.D.

TO LEARN MORE CALL OR VISIT  
**800.587.5137** [CatalystOrtho.com](http://CatalystOrtho.com)

<sup>1</sup>Baranek, Eric S., et al. "Accuracy of Humeral Implant Positioning Using a Canal-Sparing Total Shoulder Arthroplasty System." *Journal of Shoulder and Elbow Arthroplasty*, Jan. 2019.  
<sup>2</sup>According to previously published biomechanical studies, a change between the anatomic and the postoperative COR of as little as 3.0 mm can adversely affect shoulder biomechanics and kinematics and are defined as clinically significant outliers.

© indicates U.S. trademark registration. All trademarks and/or images are the property of their respective owners or holders. ©2020 Catalyst OrthoScience Inc. All rights reserved.